



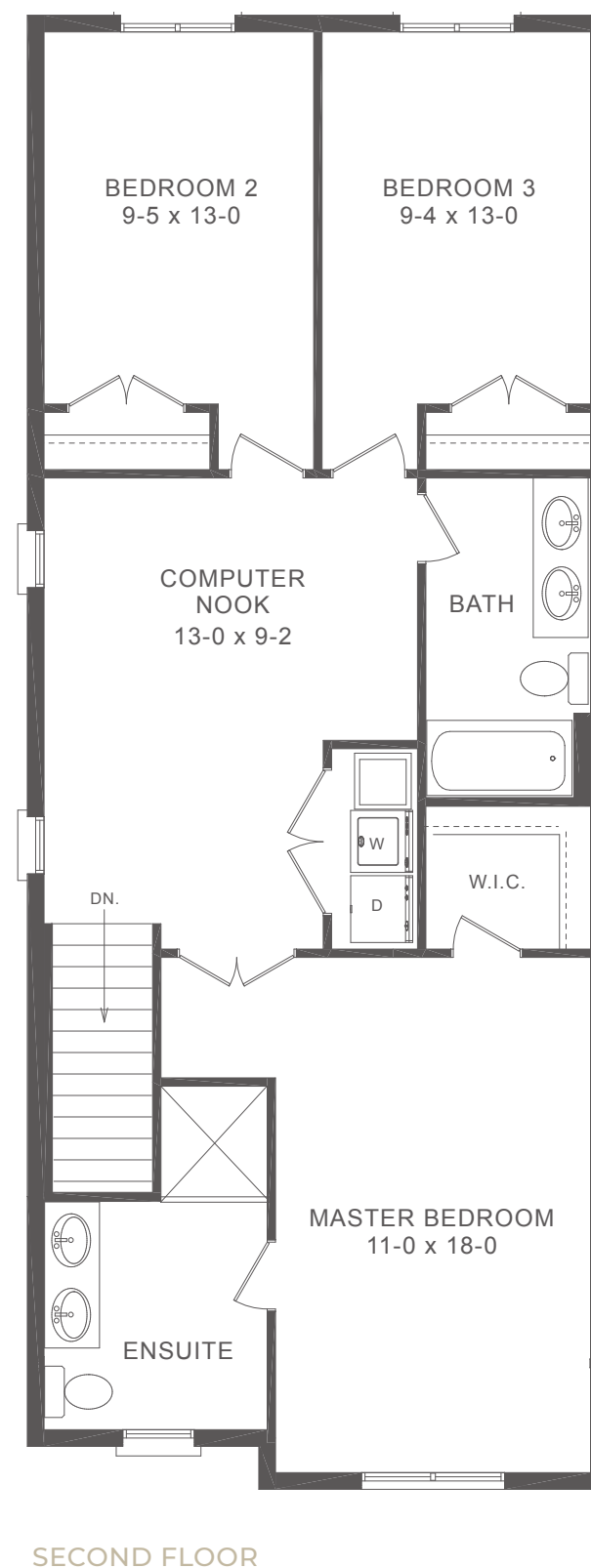
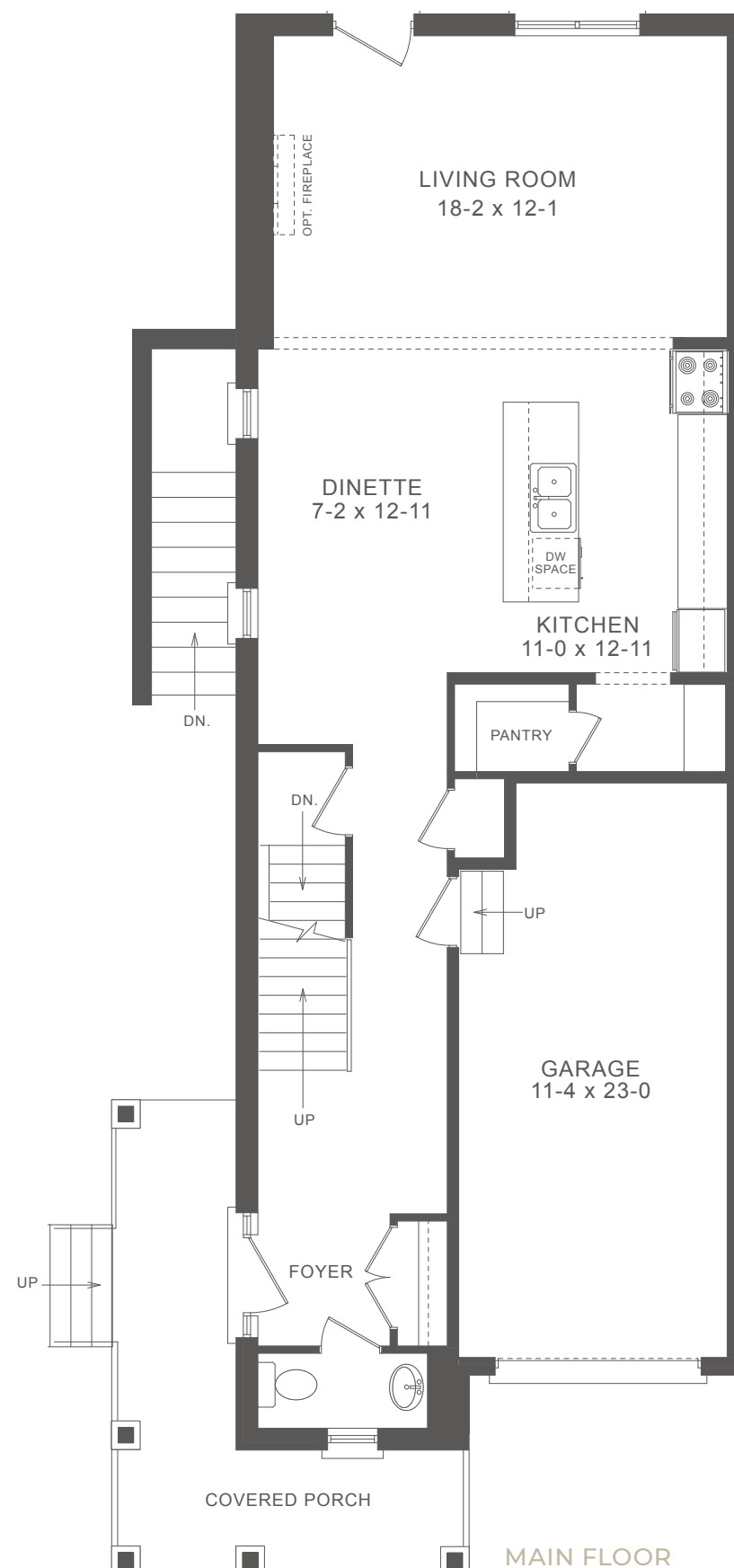
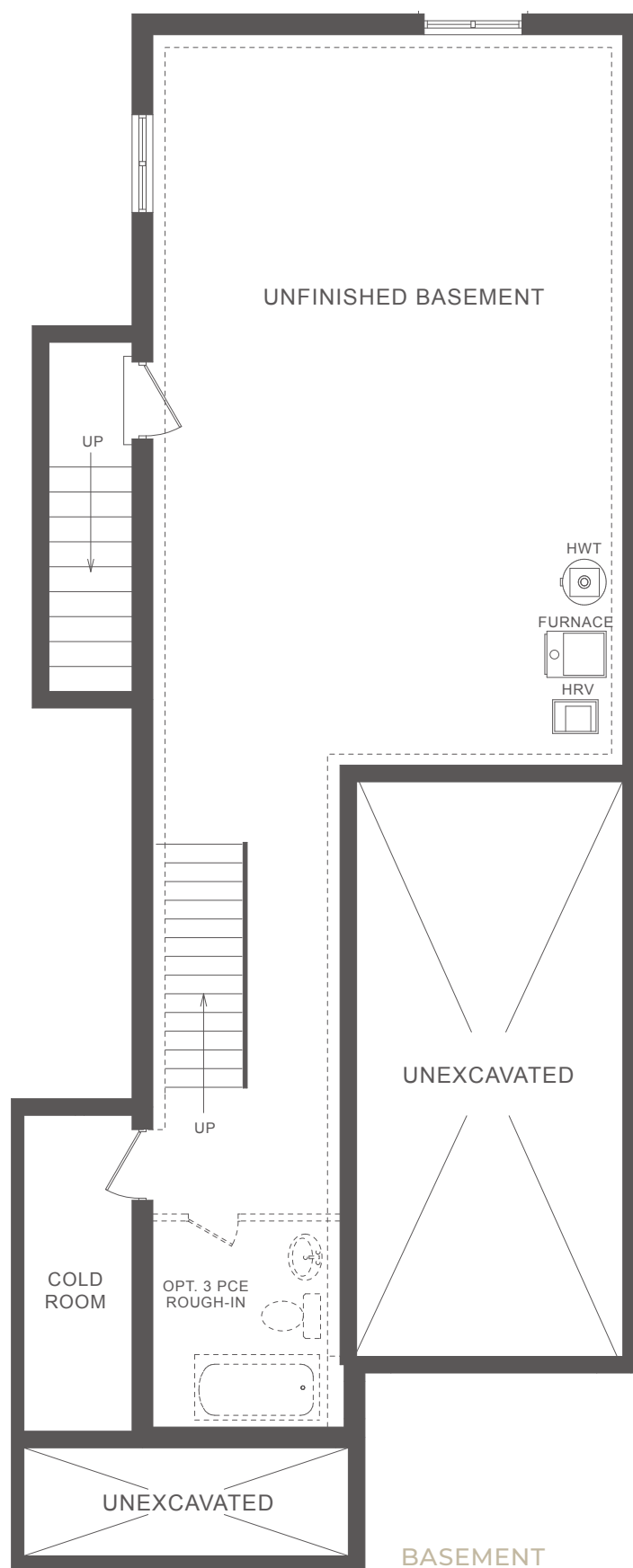
COLOUR PACKAGE B



**TOWNHOME FLOORPLANS - PHASE 2**  
DanClaytonHomes.ca







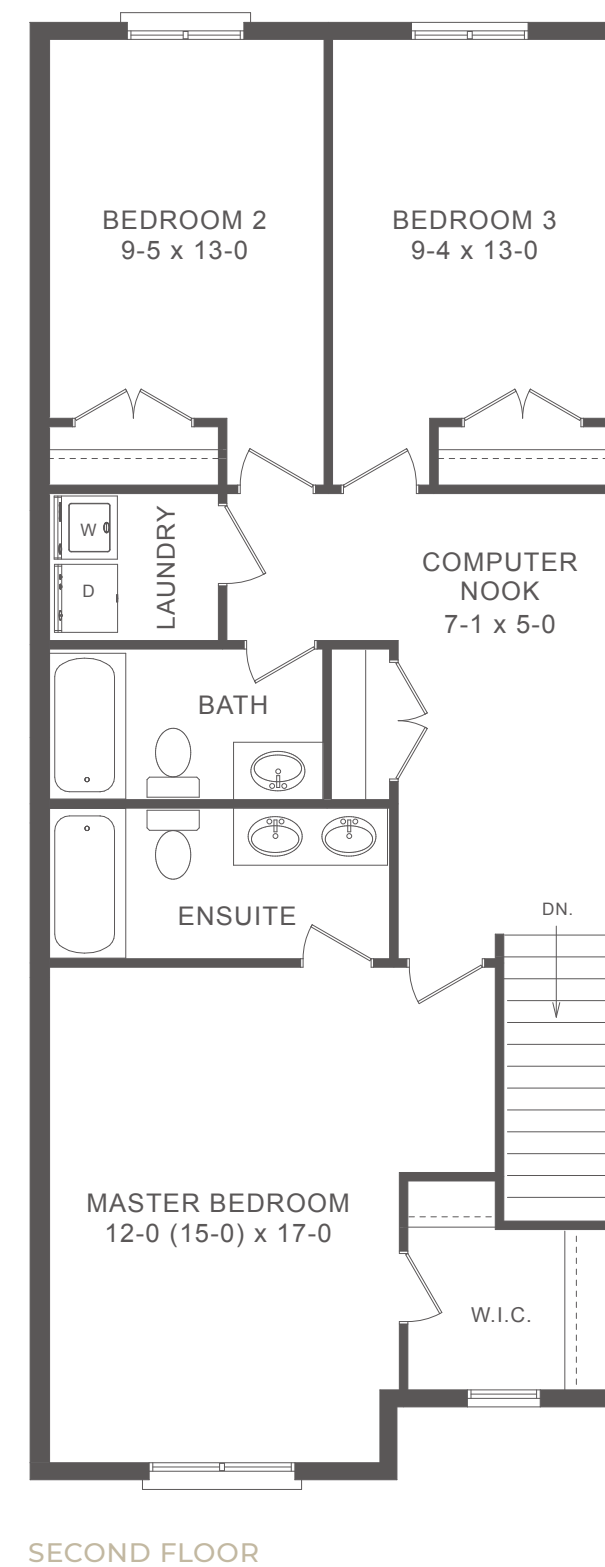
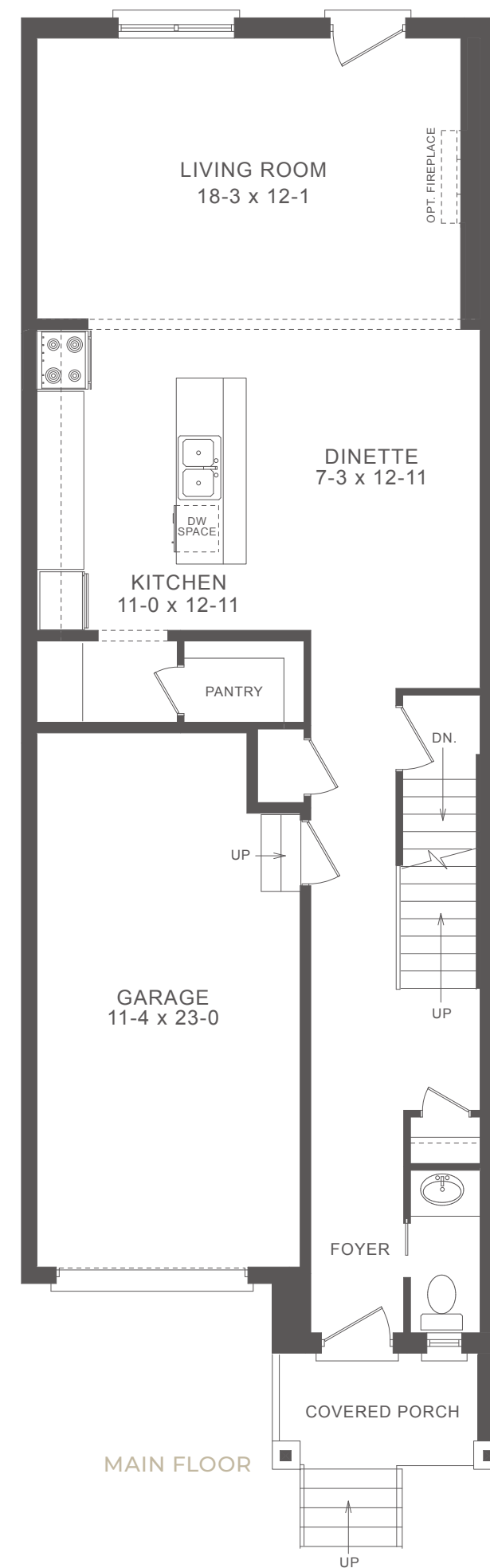
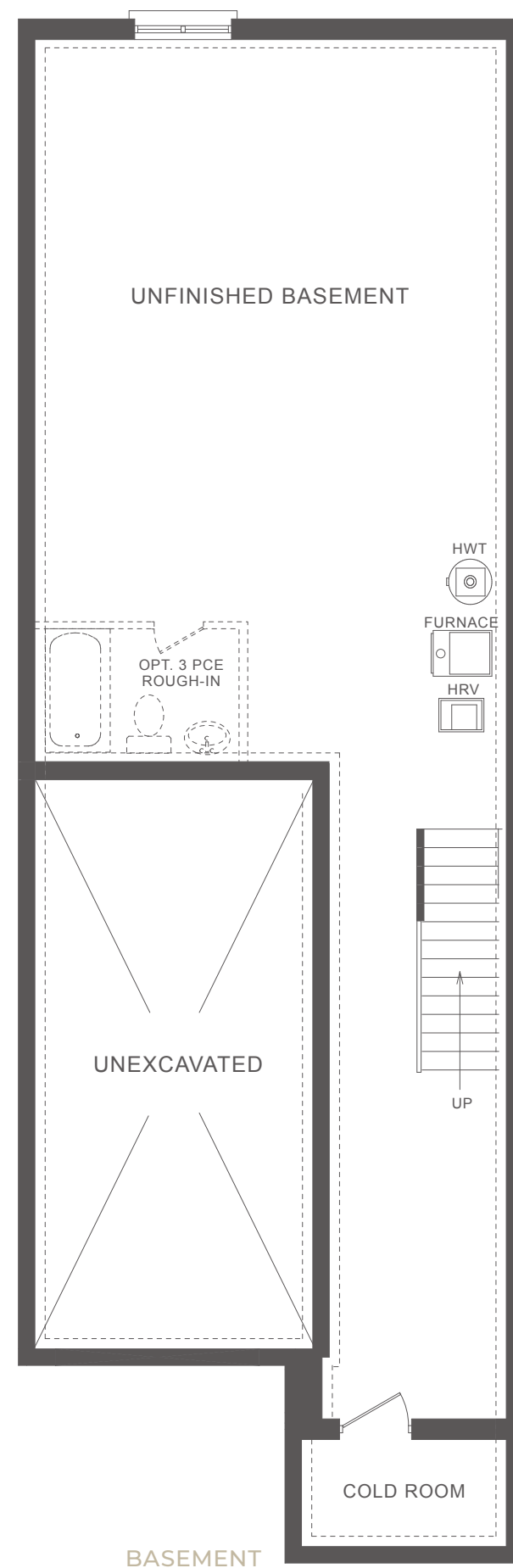


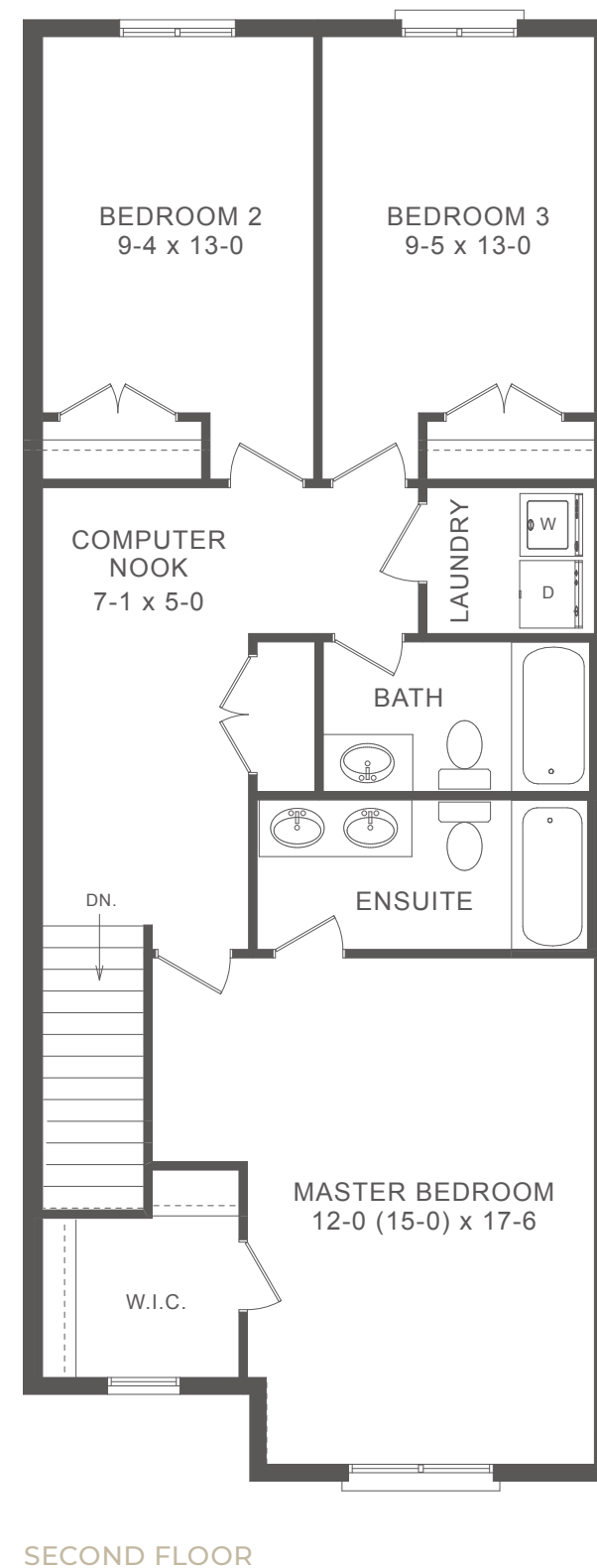
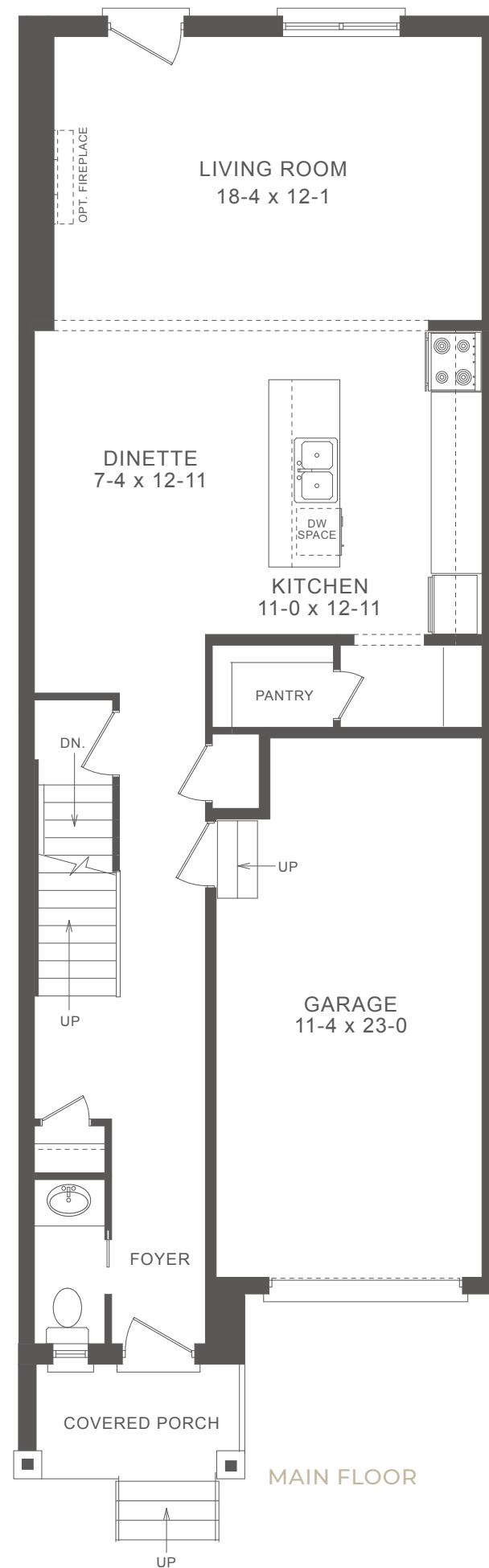
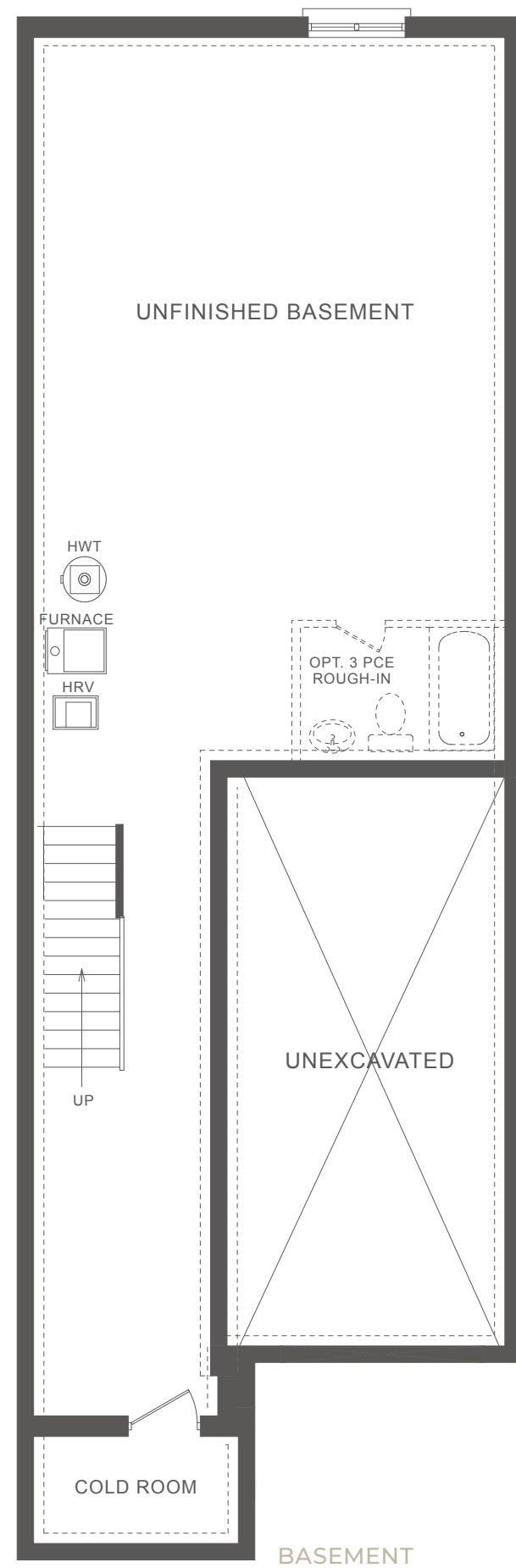
# JUNIPER C

## INTERIOR UNIT

35-6 WIDEMAN BLVD.  
(PHASE 2, LOT 9)

**1796 SQ.FT.**  
3 BED | 2.5 BATH





## JUNIPER B

INTERIOR UNIT

35-5 WIDEMAN BLVD.  
(PHASE 2, LOT 10)

**1801 SQ.FT.**  
3 BED | 2.5 BATH

Plans and specifications are subject to change without notice. Actual usable floor space may vary from stated floor area. Illustrations are artists concept only and may show optional features not included in base price. See sales representative for further information. E. & O. E.



## JUNIPER A

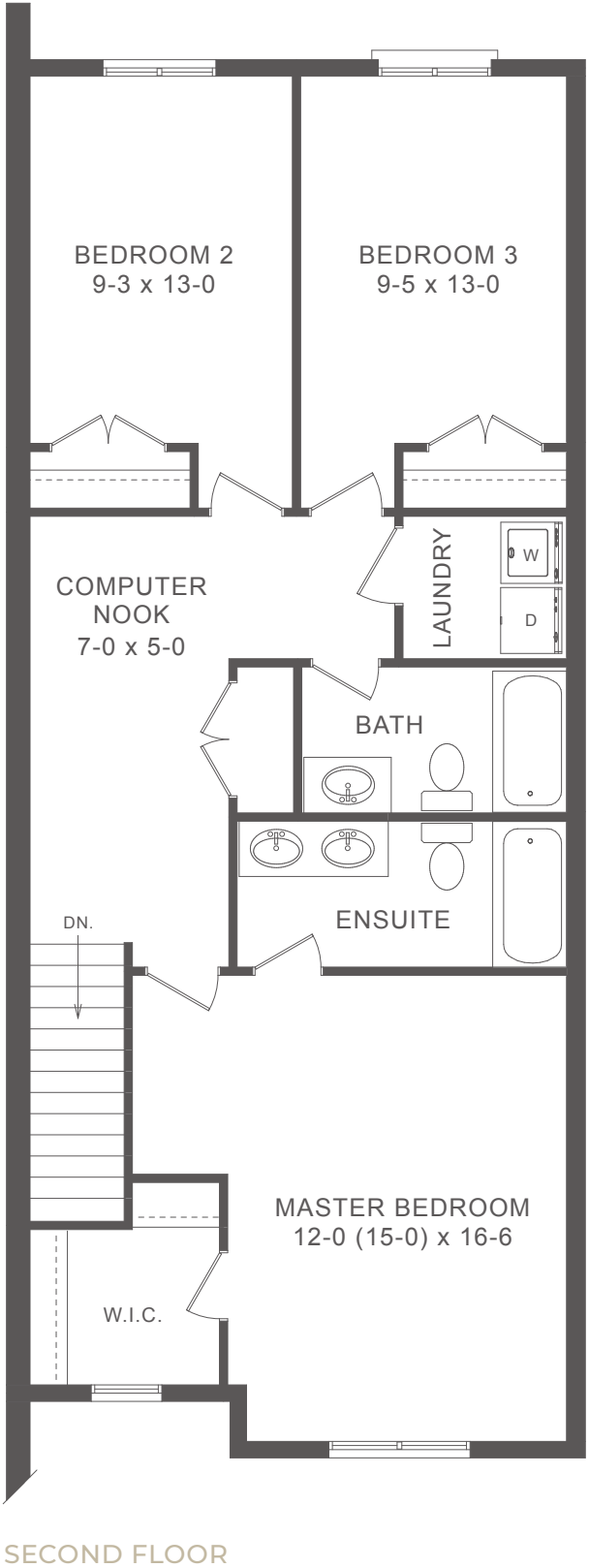
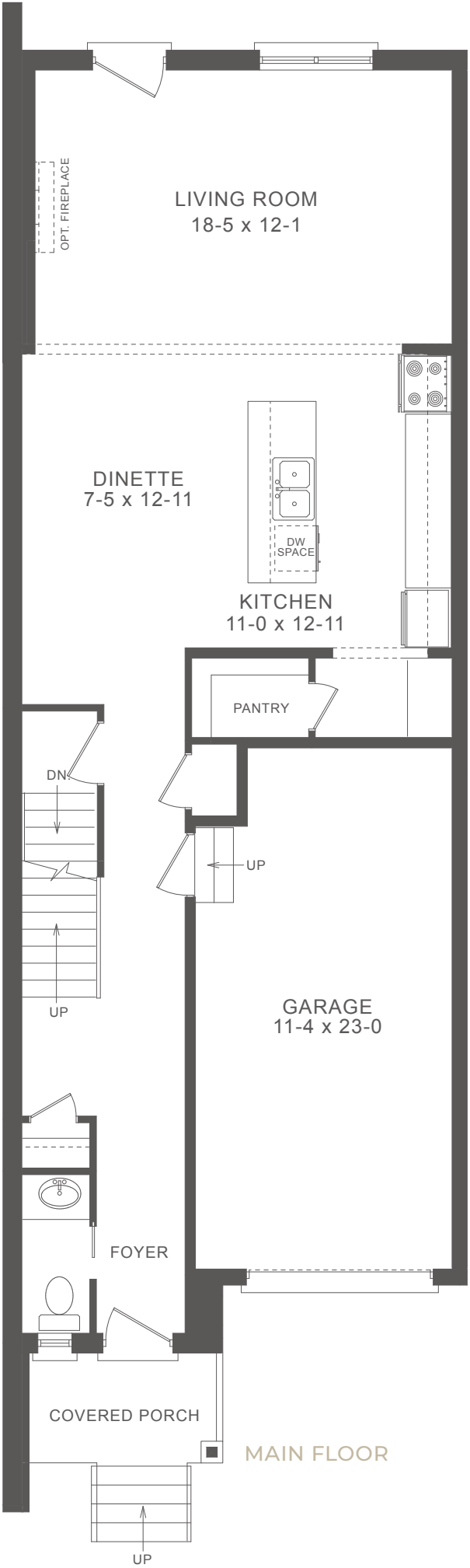
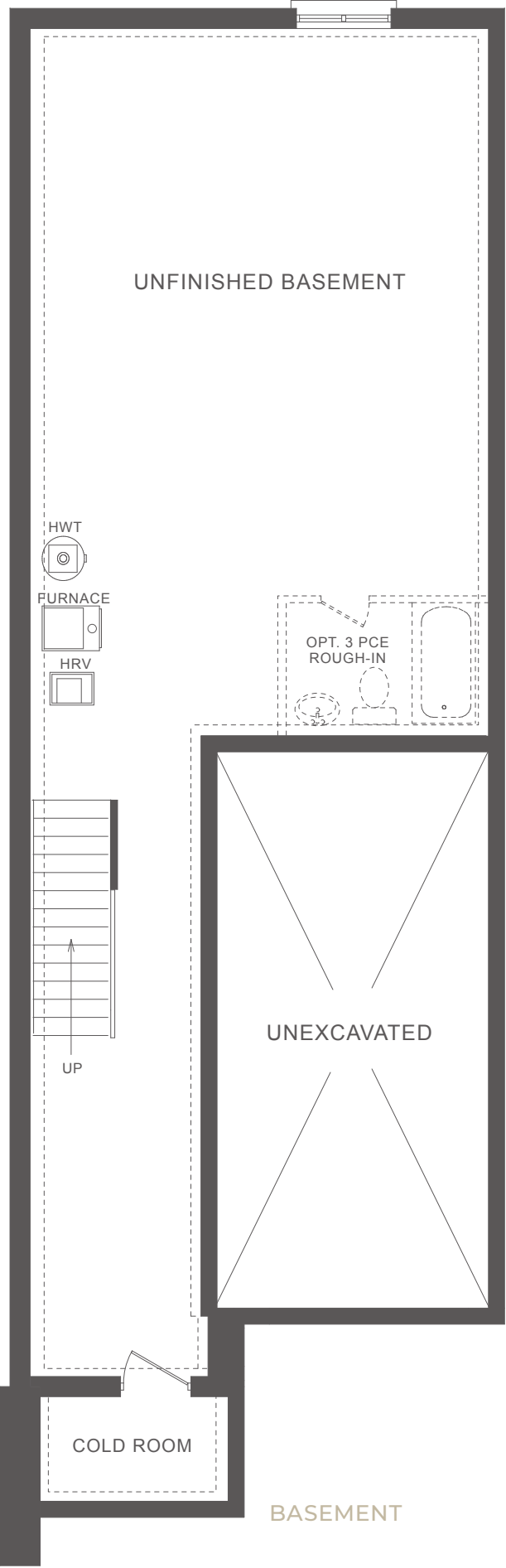
INTERIOR UNIT

35-4 WIDEMAN BLVD.  
(PHASE 2, LOT 11)

**1786 SQ.FT.**  
3 BED | 2.5 BATH

Plans and specifications are subject to change without notice. Actual usable floor space may vary from stated floor area. Illustrations are artists concept only and may show optional features not included in base price. See sales representative for further information. E. & O. E.





## JUNIPER A

INTERIOR UNIT

35-3 WIDEMAN BLVD.  
(PHASE 2, LOT 12)

**1786 SQ.FT.**  
3 BED | 2.5 BATH

Plans and specifications are subject to change without notice. Actual usable floor space may vary from stated floor area. Illustrations are artists concept only and may show optional features not included in base price. See sales representative for further information. E. & O. E.



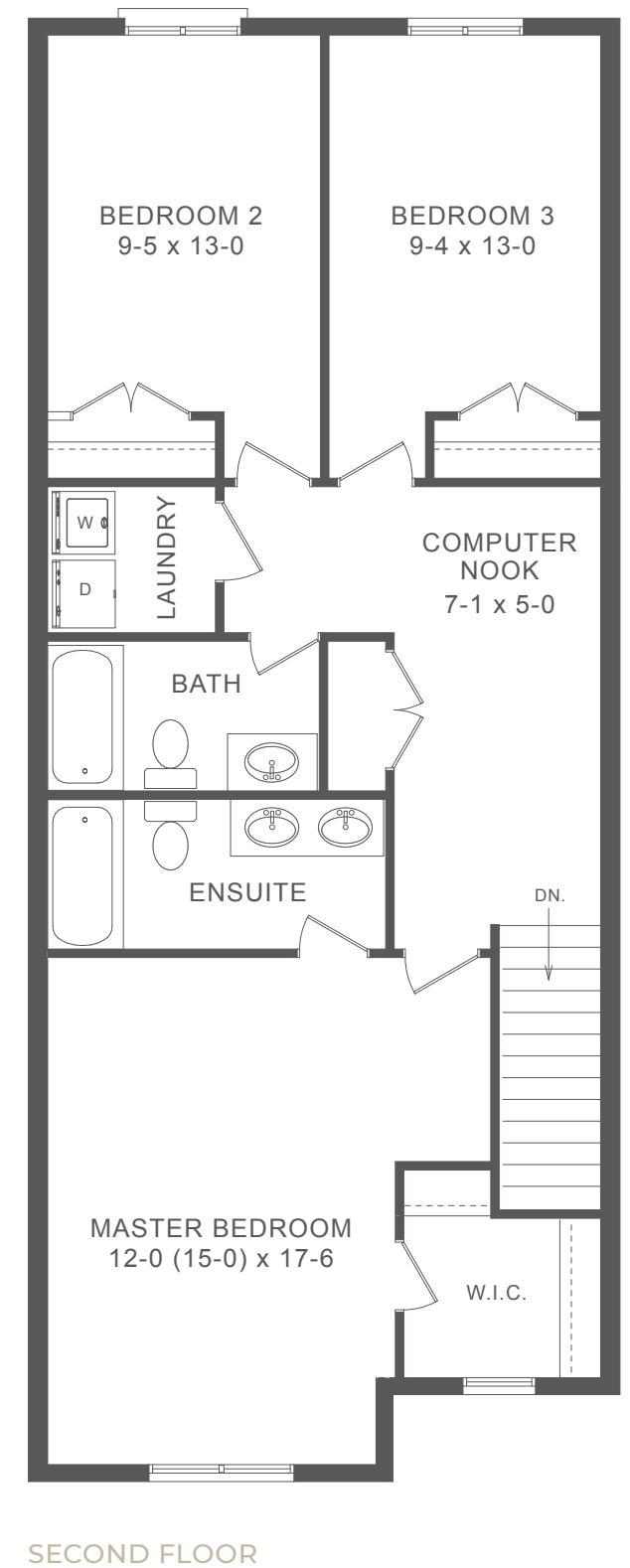
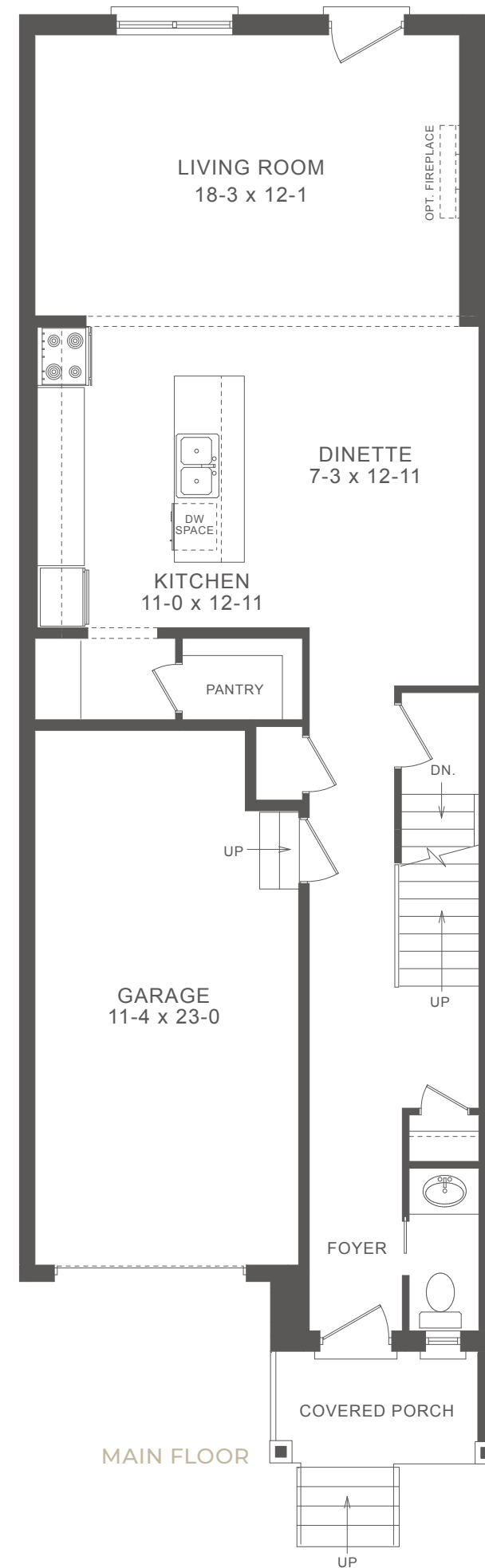
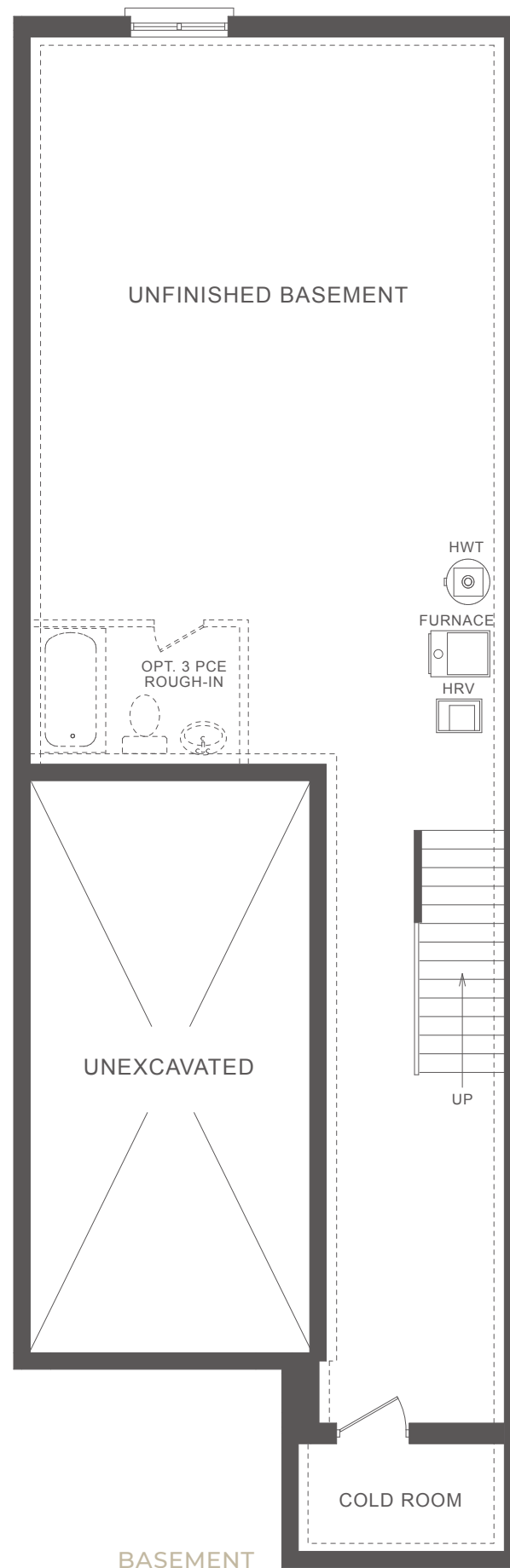
## JUNIPER A

INTERIOR UNIT

35-2 WIDEMAN BLVD.  
(PHASE 2, LOT 13)

**1786 SQ.FT.**  
3 BED | 2.5 BATH

Plans and specifications are subject to change without notice. Actual usable floor space may vary from stated floor area. Illustrations are artists concept only and may show optional features not included in base price. See sales representative for further information. E. & O. E.











COLOUR PACKAGE A